



**John Paul Jones**

## **Overnight Regatta 2011**

**A Sail Race Sponsored by the Kittery Point Yacht Club  
Friday, June 24<sup>th</sup> and 25<sup>th</sup>**

### **Notice of Race & Sailing Instructions**

*The regatta is organized by the Kittery Point Yacht Club (KPYC) and Piscataqua Sailing Association (PSA) Race Committees*

#### **1. Rules:**

Racing will be governed by The Racing Rules of Sailing 2009-2012 (RRS), the prescriptions of US SAILING, this notice of race and sailing instructions, and the rules of applicable class associations (except as altered by this notice of race and sailing instructions).

#### **2. Classes and Divisions:**

**2.1** This regatta is a pursuit race with handicaps built into the start time of each yacht. Yachts will start based on their PHRF rating i.e. slowest yacht starting first and fastest starting last. There will be two classes: Racing and Cruising. If there are 5 or more boats of any one design class, this class will be scored separately. Please refer to the scratch sheet that will be included in the skipper's package for individual start times.

#### **3. Eligibility:**

**3.1** Boats must be approved per the Sailing Instructions, registered and listed on the online entry list with a valid PHRF handicap. Registration forms are available at [www.kpyc.net](http://www.kpyc.net) and [www.sailpsa.org](http://www.sailpsa.org). The deadline for registration is Wednesday June 11, 2011. Email [rearcommodorekpyc@gmail.com](mailto:rearcommodorekpyc@gmail.com) to register. Registration is free. Brunch will be provided on Saturday, June 25<sup>th</sup>. The fee for brunch is \$8.00 per crew member.

#### **4. Schedule of Pursuit Race:**

**4.1** The race from the mouth of the Piscataqua River over an ocean course between Cape Porpoise and Cape Ann is scheduled for Friday June 24<sup>th</sup> – 25<sup>th</sup>, 2011.

**4.2** This regatta is a pursuit race with handicaps built into the start time of each yacht. Please refer to the scratch sheet for individual start times. Scratch sheets will be made available at the skippers meeting. There is no distinction of class for this start.

**4.3** The warning signal will be made at 19:00 hours GPS time with the first boat starting 5 minutes after. No other starting signals will be given. Boats shall not enter the starting area until 5 minutes before their start time. Only Race Committee may protest a violation of this rule. Any postponements will just be added to every boats start time.

**4.4** Check in before your start time. Yachts are required to check in by sailing past Race Committee prior to their start time with their class flag displayed on the backstay. After 19:25 any boat not checked in can do so via VHF channel 68 at Race Committee's discretion. Boats that withdraw from a race or decide not to start after coming into the racing area, must so advise Race Committee as soon as reasonably possible. Sail numbers shall determine a yacht's identification. Once the Race Committee boat is on station at the starting line, a yacht is required to check by leaving the stern of the Race Committee boat to starboard. Yachts that withdraw from a race or decide not to start, SHALL advise Race Committee as soon as reasonably possible on VHF Channel 68. Sail numbers are required and shall determine a yacht's identification. The sail numbers must match on all sails (Boat name can be used if no sail number is available).

**4.5** All yachts will remain clear of the starting line designated to a minimum of 3 boat lengths below and five boat lengths either side of the pin and RC boat during the 5 minute prior to any boats starting time. Boats are requested to remain clear of finish line when other boats are finishing.

**4.6** Effort will be made to hail on VHF channel 68 (PHRF boats) any boats that are OCS. It is ultimately the skipper's responsibility to know they were OCS and return to clear. Lack of hail will not be grounds for redress.

**4.7** Notice of race will be located on the KPYC WEB site. Amendments will be announced at the captains' meeting. It is the skipper's responsibility to be aware of any amendments to the sailing instructions. Results of protests will be on available at the front deck of the Oceanic Hotel on Star Island.

**4.8** All participants must agree to be bound by the current Racing Rules of Sailing, class rules, and all other rules that govern this event.

## **5. COURSES (see appendix A, Courses)**

**5.1** There will be "Around the Buoys" and "Fixed Mark" racing on the waters off of Portsmouth Harbor.

**5.2** Courses will be announced on VHF 68 radio 3 times, approximately 18:30, 19:00, and 19:30. The course number will be announced distance and bearing to the weather mark may or may not be given refer to your SI for details.

**5.3** Courses: All Classes

Starting Line: RC to pin in the vicinity of 2KR

Course One: Start 2KR - Dry Salvage Lighted Buoy 1 - Boon Island Ledge Lighted Whistle Buoy 22A - 2KR - 64.78 km

Course Two: Start 2KR - Merrimack River Lighted Whistle Buoy MR - Boon Island Ledge Lighted Whistle Buoy 22A - 2K - 52.27 km

Course Three: Start 2KR - Merrimack River Lighted Whistle Buoy MR - York Ledge Lighted Whistle Buoy 24YL - 2KR - 38.08 km

Course Four: Start 2KR - Hampton Harbor Channel Approach Lighted Buoy 2 - York Ledge Lighted Whistle Buoy 24YL - 2KR - 31.53 km

Finish Line: RC to pin in vicinity of 2KR

## **6. SAFETY REQUIREMENTS**

**6.1** All boats shall be properly equipped, be fully seaworthy and shall be self-righting and properly ballasted as well as be in compliance with the requirements of the U.S. Coast Guard and the requirements of the New Hampshire Boating Law.

**6.2** All boats shall comply with their class rules regarding safety equipment.

**6.3** Captains shall be exclusively responsible for compliance with such requirements and be prepared to have boats inspected at any time.

## **7. RADIO USE**

**7.1** All entrants are required to have aboard a VHF Radio and monitor Channel 68 at all times, start, race, and finish.

**7.2** RRS 41 is in effect. This includes cell phones.

## **8. PROTESTS**

**8.1** Protests will be submitted in accordance with RRS Part 5, Section A.

**8.2** Mandatory arbitration will be held for protests involved Part 2 of the Racing Rules of Sailing.

- 8.3** Protest filing deadline is 1 hour after the last boat finishes.
- 8.4** Protests must be filed with designated protest committee. Protest forms will be available at the protest locations.
- 8.5** All protests will be arbitrated prior to formal protest committee review.
- 8.6** Protests not decided in arbitration will move to the protest room.

## **9. SCORING & TIME ALLOWANCES**

- 9.1** PHRF yachts will be scored using Time on Distance in reverse for a pursuit racing format.
- 9.2** Any boat not finishing by 11:00 am on June 25<sup>th</sup> will be scored DNF. RC has the right to extent this time as it sees fit.

## **10. PRIZES**

The first three boats in each class will receive recognition. Prizes will be awarded by the Kittery Point Yacht Club at the Saturday morning brunch.

## **11. AMENDMENTS TO THIS NOTICE**

The KPYC reserves the right to amend this notice of race. Any amendments to this Notice made prior to June 24<sup>th</sup>, 2011 will be made available at the Captain's meeting.

## **12. DISCLAIMER OF LIABILITY/RESPONSIBILITIES**

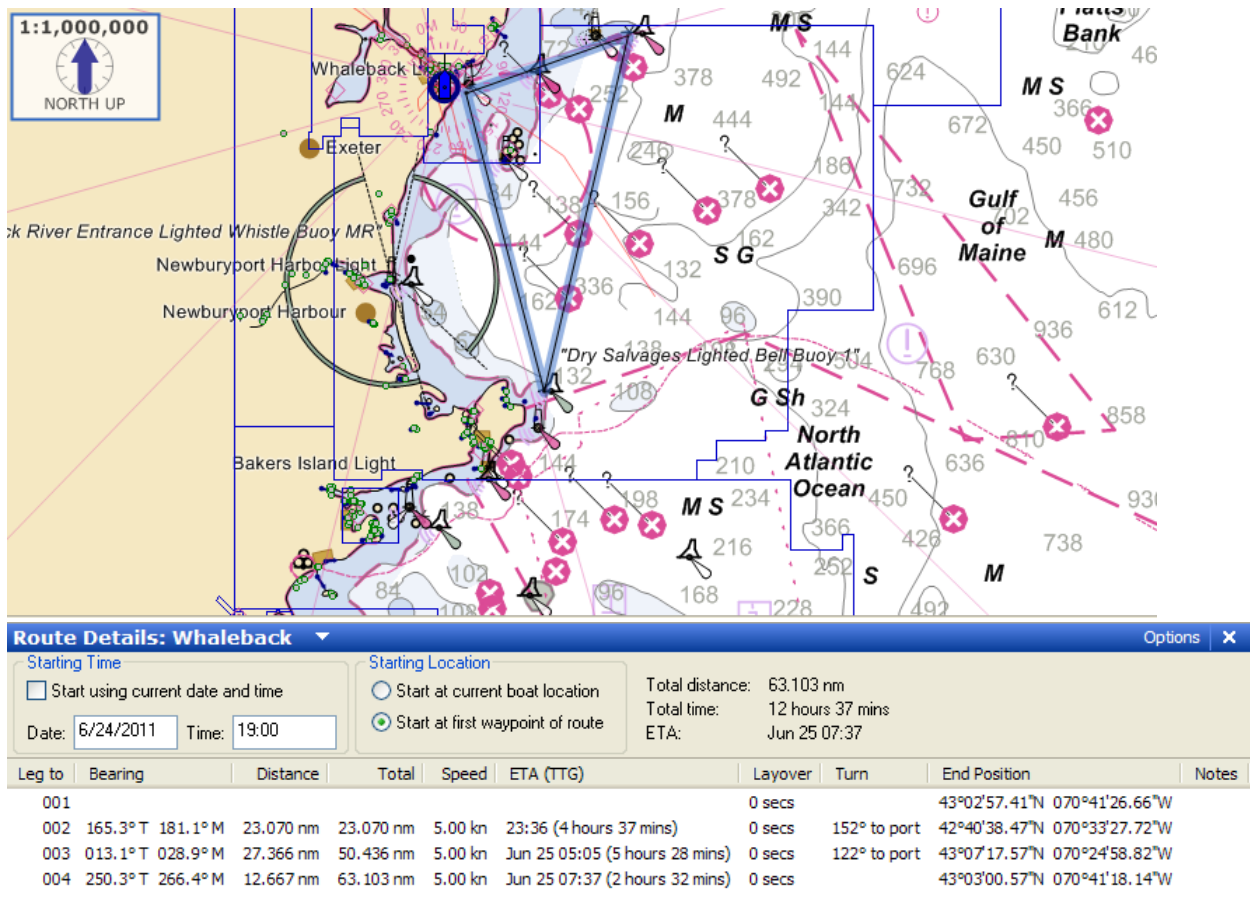
- 12.1** Competitors participate in this regatta entirely at their own risk.
- 12.2** KPYC and PSA and participating sponsors do not accept responsibility for loss of life or injury to participant or others, or for the loss of or damage to any vessel in any way or from any cause during or related to this regatta.
- 12.3** The safety of the boat and its crew is the sole responsibility of its skipper, who must ensure that the boat is thoroughly sound and seaworthy and manned by an experienced crew who are physically fit. The skipper must be satisfied as to the soundness of the hull, spars, gear, rigging, sails and gear. He must ensure that all equipment is properly maintained and stowed, that he and the crew know where it is kept and how it is to be used. Neither the establishment of regulations nor the inspection of the boat in any way limits and reduces the complete and unlimited responsibility of the skipper.
- 12.4** It is the sole and inescapable responsibility of the skipper of each boat to decide whether or not to start or continue in any race, and to notify the Race Committee if the boat withdraws after starting any race.

## **13. Conduct**

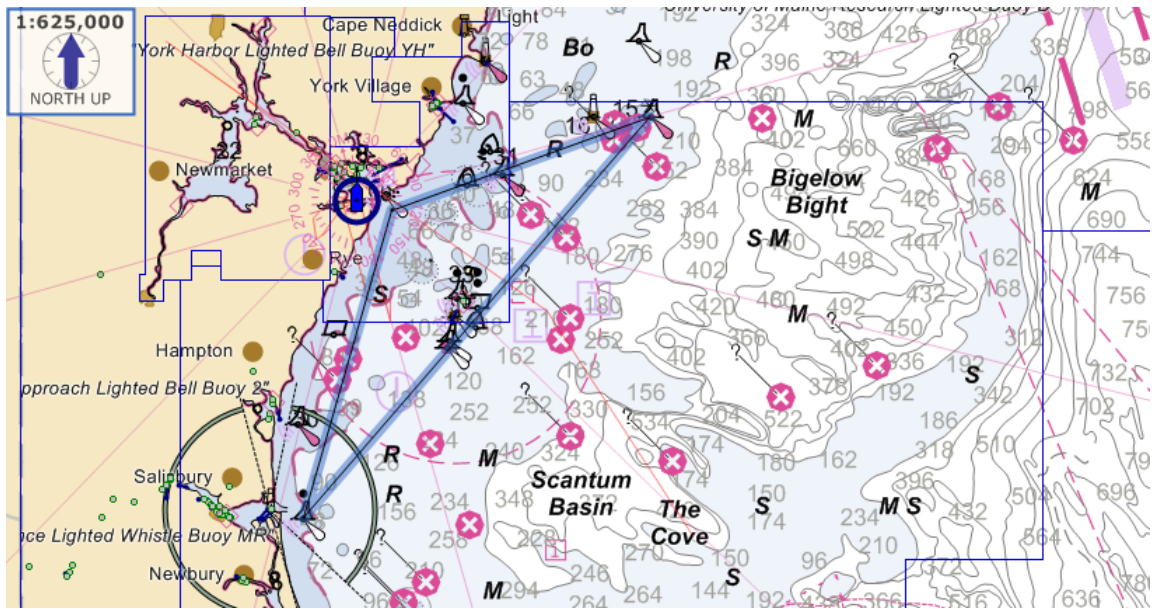
- 13.1** The boat owner/captain will be responsible for the conduct of their crew offshore and onshore. KPYC will not allow a serious breach of good conduct by any participant.
- 13.2** The KPYC Race Committee reserves the right to eject any boat, its captain and crew, from the island and to reject any future KPYC Regattas.

## **Appendix A: Courses**

### **Course 1**



## Course 2



**Route Details: Whaleback** Options X

Starting Time

Start using current date and time

Date: 6/24/2011 Time: 19:00

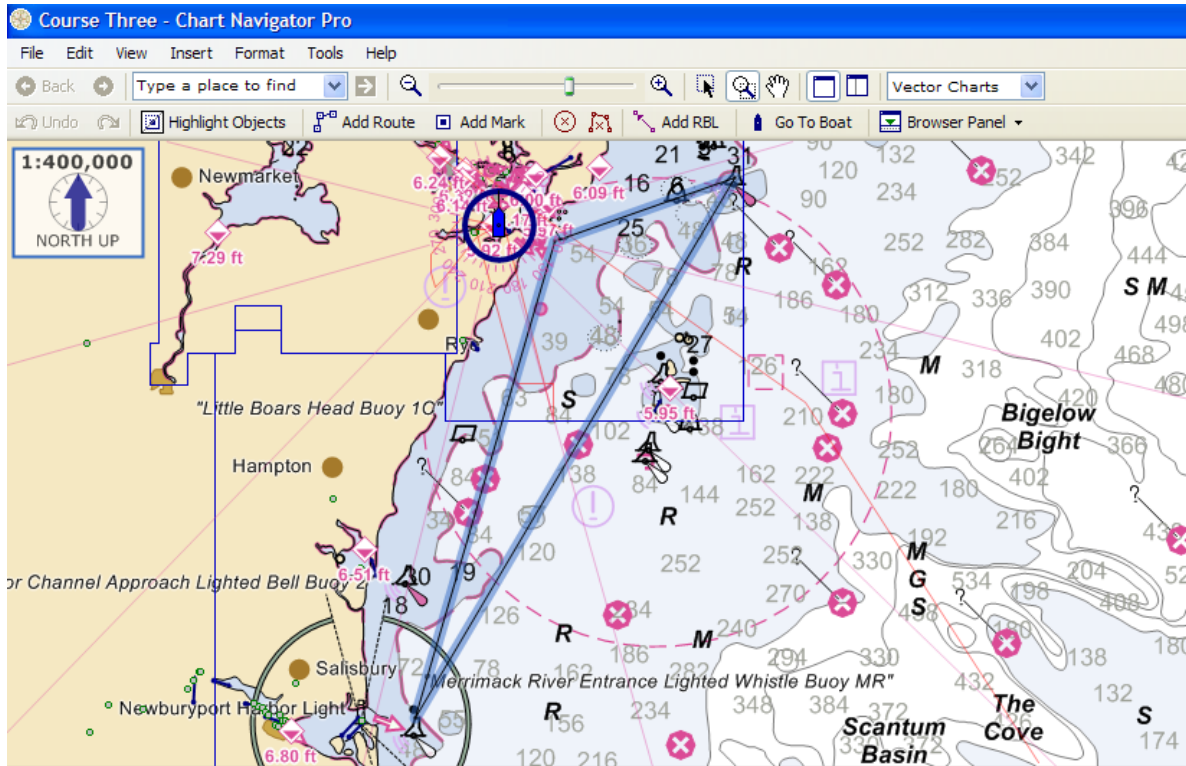
Starting Location

- Start at current boat location
- Start at first waypoint of route

Total distance: 52.270 nm  
 Total time: 10 hours 27 mins  
 ETA: Jun 25 05:27

Leg to	Bearing	Distance	Total	Speed	ETA (TTG)	Layover	Turn	End Position	Notes
001						0 secs		43°02'57.41"N 070°41'26.66"W	
002	195.9° T 211.8° M	14.919 nm	14.919 nm	5.00 kn	21:59 (2 hours 59 mins)	0 secs	155° to port	42°48'36.50"N 070°47'01.52"W	
003	040.7° T 056.4° M	24.685 nm	39.604 nm	5.00 kn	Jun 25 02:55 (4 hours 56 mins)	0 secs	150° to port	43°07'17.57"N 070°24'58.82"W	
004	250.3° T 266.4° M	12.667 nm	52.270 nm	5.00 kn	Jun 25 05:27 (2 hours 32 mins)	0 secs		43°03'00.57"N 070°41'18.14"W	

Course 3



**Route Details: Whaleback** Options

Starting Time:  Start using current date and time  
 Date: 6/24/2011 Time: 19:00

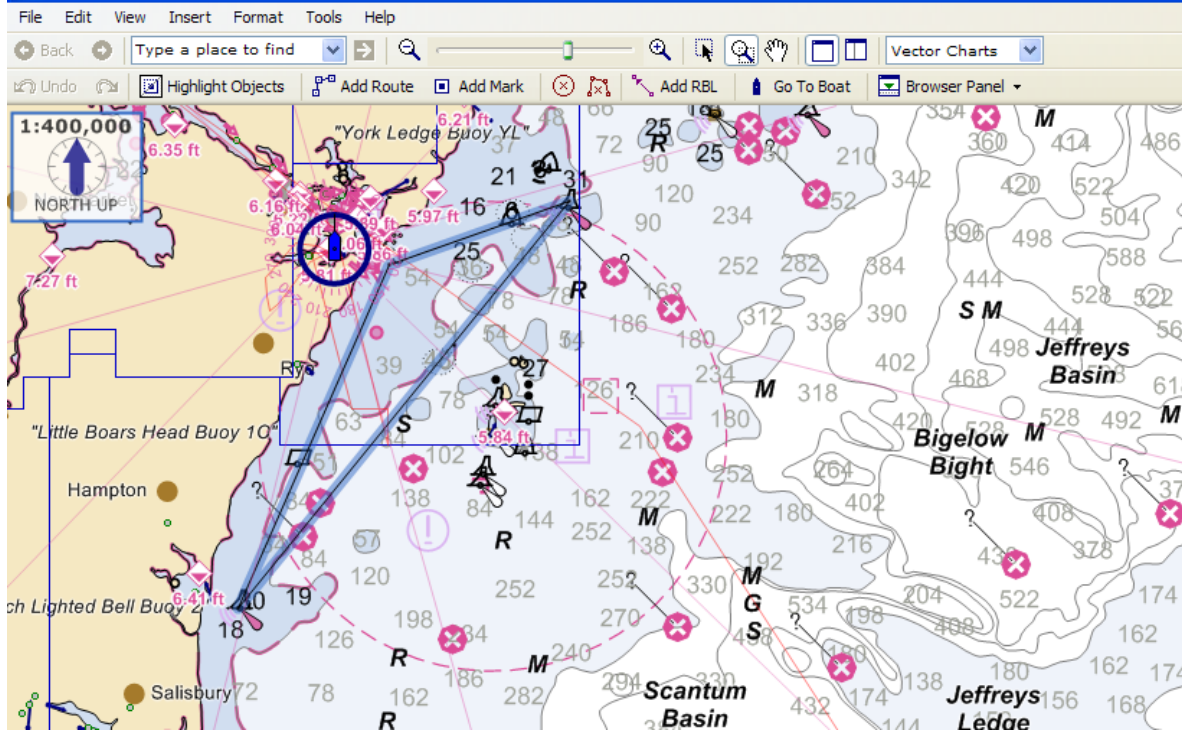
Starting Location:  Start at current boat location  
 Start at first waypoint of route

Total distance: 38.086 nm  
 Total time: 7 hours 37 mins  
 ETA: Jun 25 02:37

Leg to	Bearing	Distance	Total	Speed	ETA (TTG)	Layover	Turn	End Position	Notes
001						0 secs		43°02'57.41"N 070°41'26.66"W	
002	196.4° T 212.3° M	14.455 nm	14.455 nm	5.00 kn	21:53 (2 hours 53 mins)	0 secs	165° to port	42°49'05.29"N 070°47'00.52"W	
003	030.5° T 046.3° M	18.240 nm	32.694 nm	5.00 kn	Jun 25 01:32 (3 hours 39 mins)	0 secs	139° to port	43°04'47.63"N 070°34'20.29"W	
004	250.7° T 266.7° M	5.392 nm	38.086 nm	5.00 kn	Jun 25 02:37 (1 hour 5 mins)	0 secs		43°03'00.57"N 070°41'18.14"W	

**Course 4**

Course Four - Chart Navigator Pro



Route Details: Whaleback Options X

<b>Starting Time</b> <input type="checkbox"/> Start using current date and time Date: <input type="text" value="6/24/2011"/> Time: <input type="text" value="19:00"/>		<b>Starting Location</b> <input type="radio"/> Start at current boat location <input checked="" type="radio"/> Start at first waypoint of route		Total distance: 31.530 nm Total time: 6 hours 18 mins ETA: Jun 25 01:18
---	--	---	--	---

Leg to	Bearing	Distance	Total	Speed	ETA (TTG)	Layover	Turn	End Position	Notes
001						0 secs		43°02'57.41"N 070°41'26.66"W	
002	203.8° T	219.7° M	10.911 nm	10.911 nm	5.00 kn	21:10 (2 hours 11 mins)	0 secs	164° to port	42°52'58.33"N 070°47'27.43"W
003	039.0° T	054.8° M	15.227 nm	26.138 nm	5.00 kn	Jun 25 00:13 (3 hours 3 mins)	0 secs	148° to port	43°04'47.63"N 070°34'20.29"W
004	250.7° T	266.7° M	5.392 nm	31.530 nm	5.00 kn	Jun 25 01:18 (1 hour 5 mins)	0 secs		43°03'00.57"N 070°41'18.14"W